

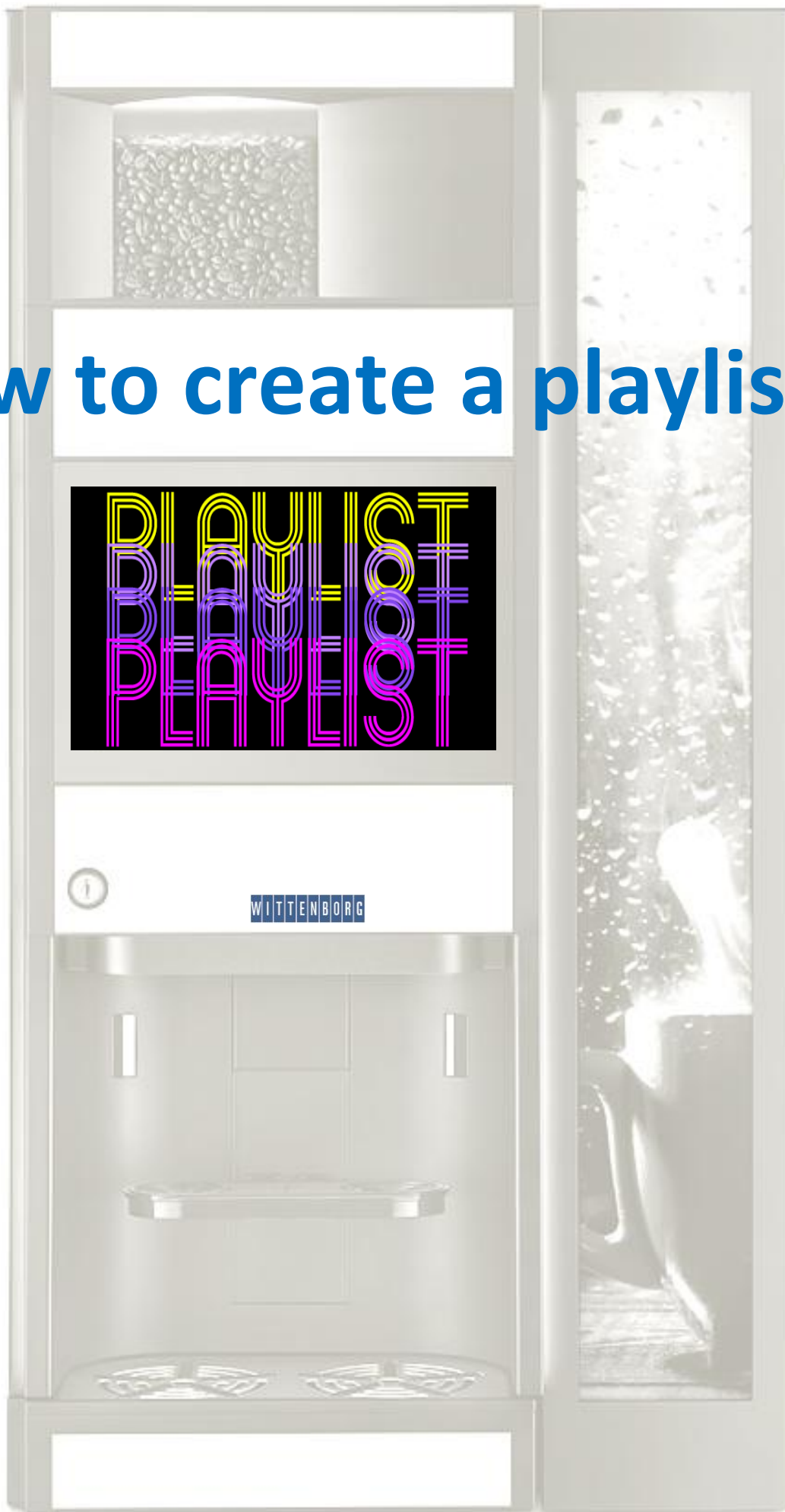
How to create a playlist ?

A graphic featuring the word "PLAYLIST" in a stylized, multi-colored font. The letters are composed of multiple overlapping outlines in yellow, purple, and pink, set against a black background.

PLAYLIST

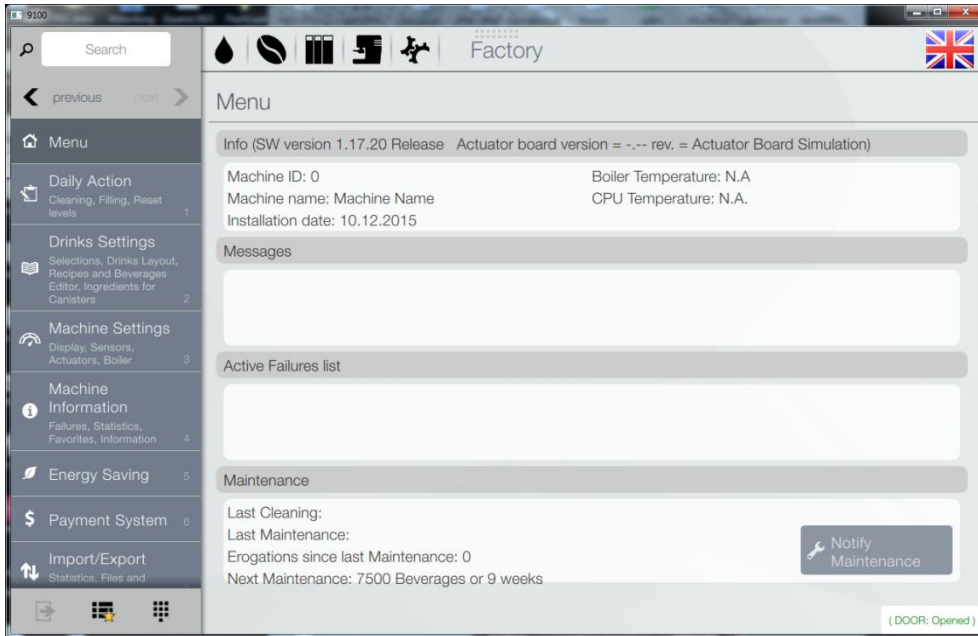


WITTENBORG

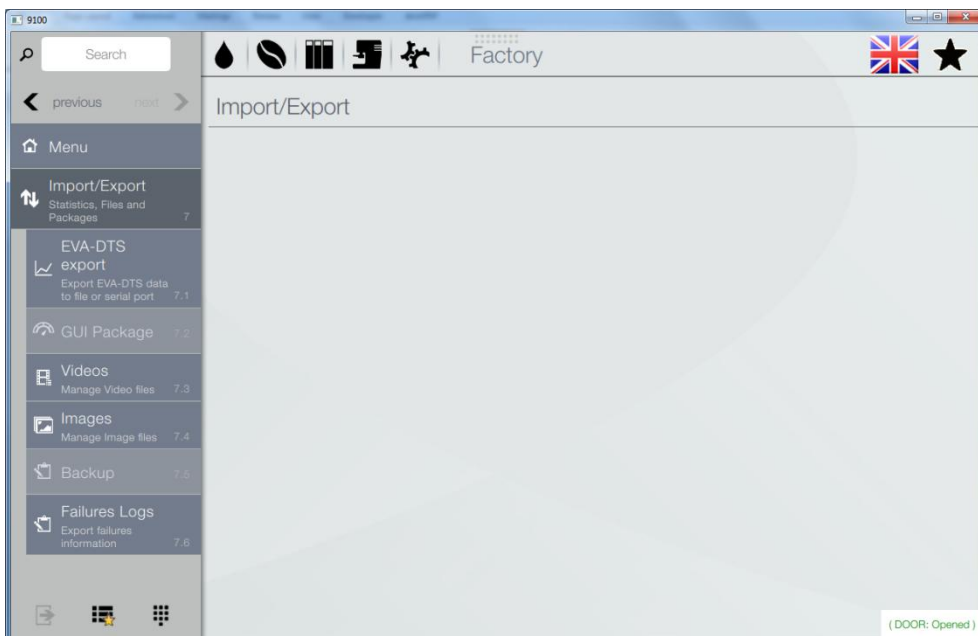


This step by step guide aims to make you able to create a playlist on a Wittenborg 9100 machine. In this example we create a playlist called **WITTENBORG** and we use it for playing during the delivery of **COFFEE** (the drink). In this example we will upload a video and a picture. Here below the example:

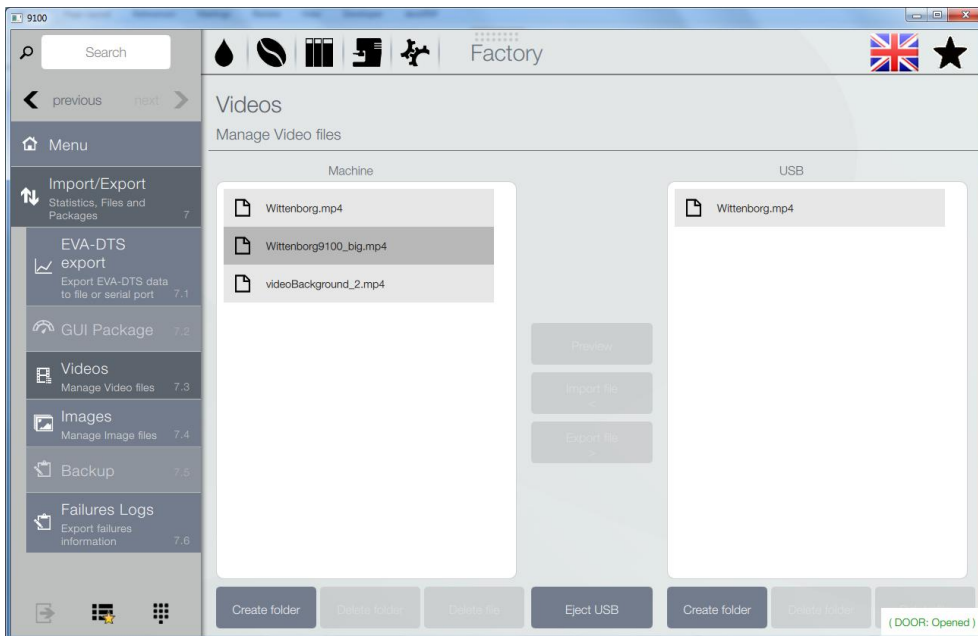
From the start screen go to the **IMPORT/EXPORT MENU**



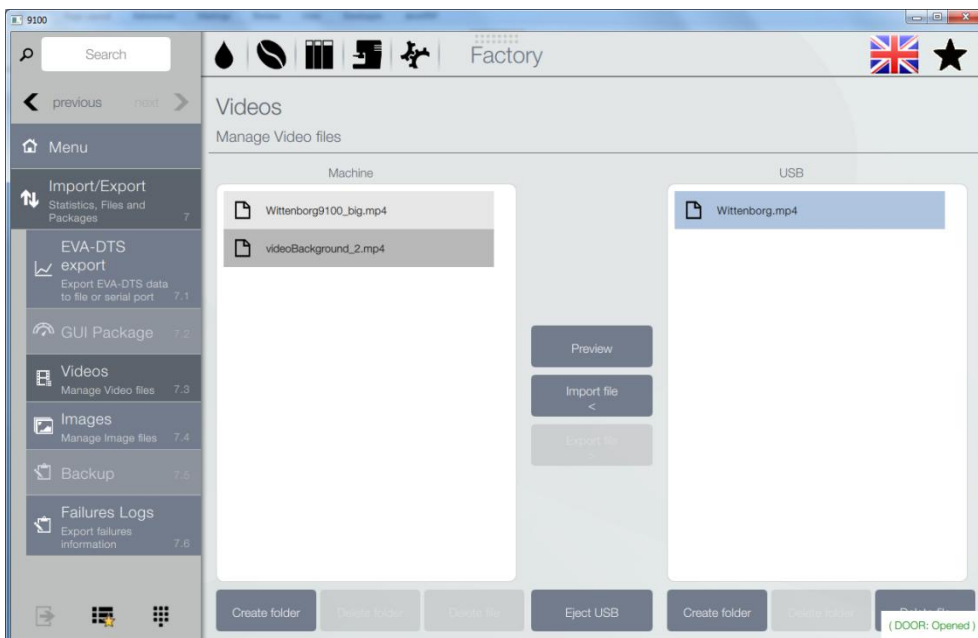
Go To **VIDEOS**



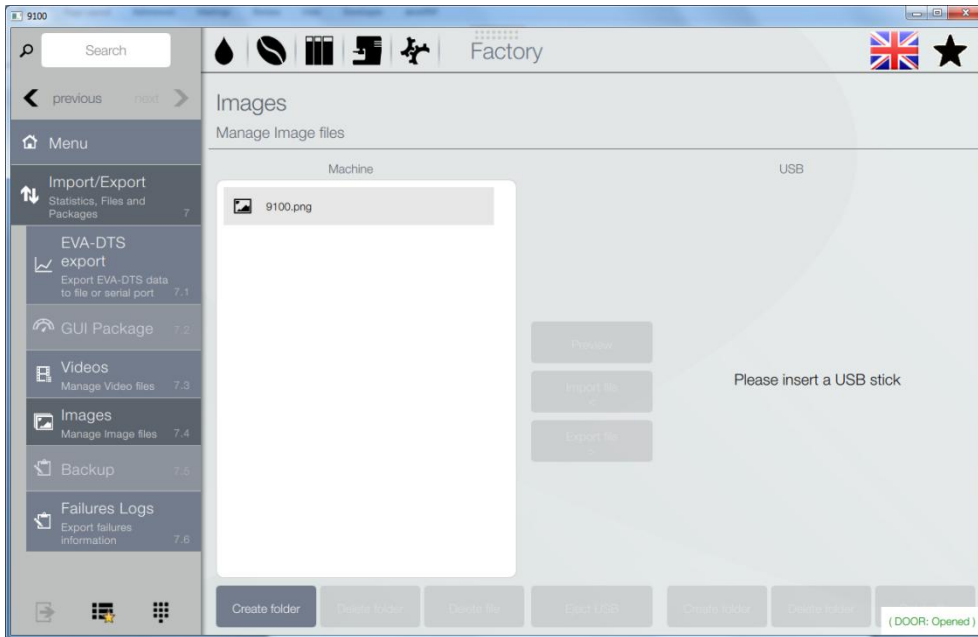
Insert an USB containing your video file.
The format must be .mp4, .avi or .mov format.



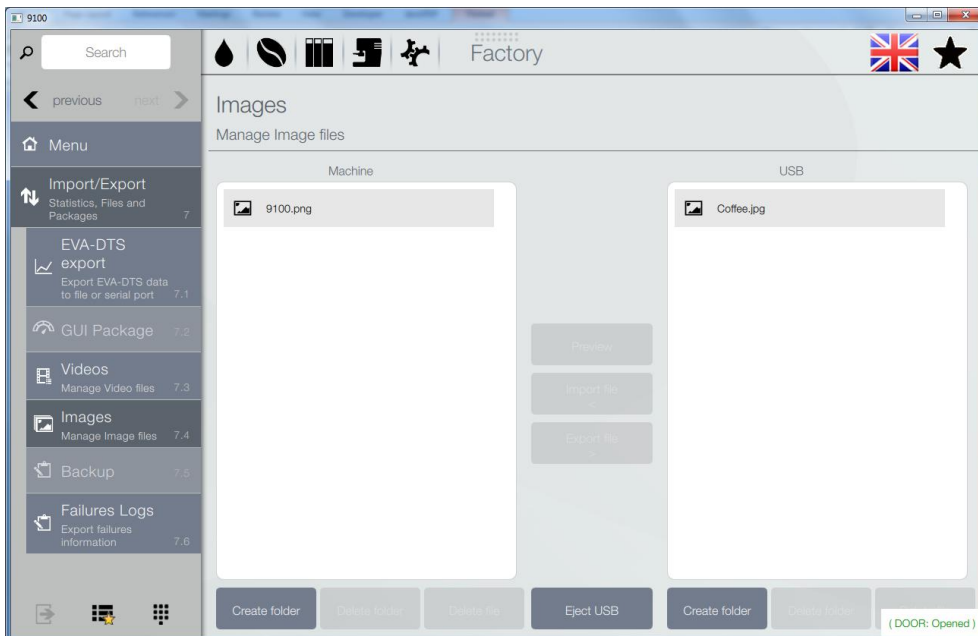
Click on the filename **Wittenborg.mp4** and IMPORT FILE



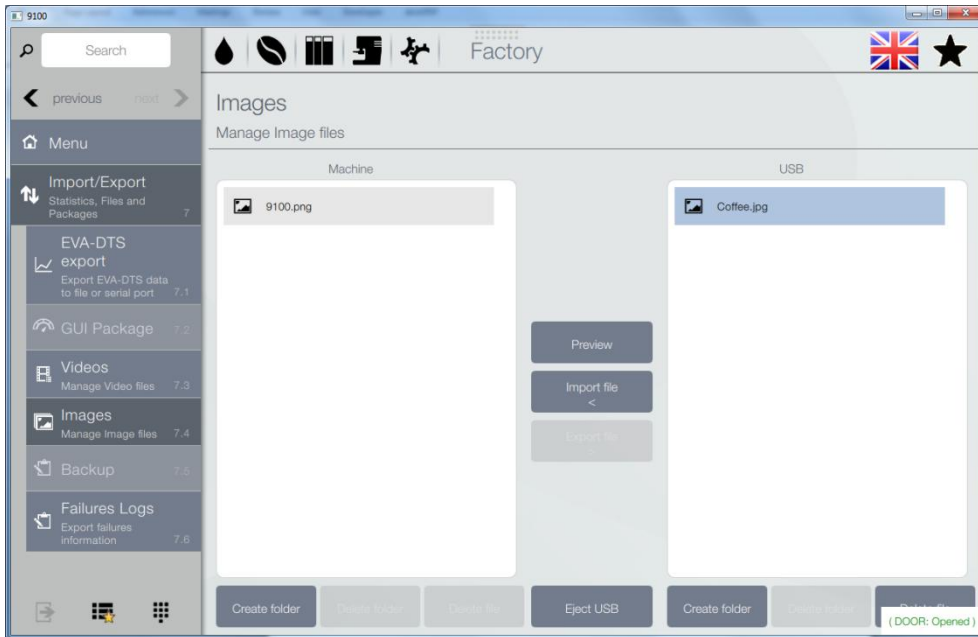
Go to IMAGES



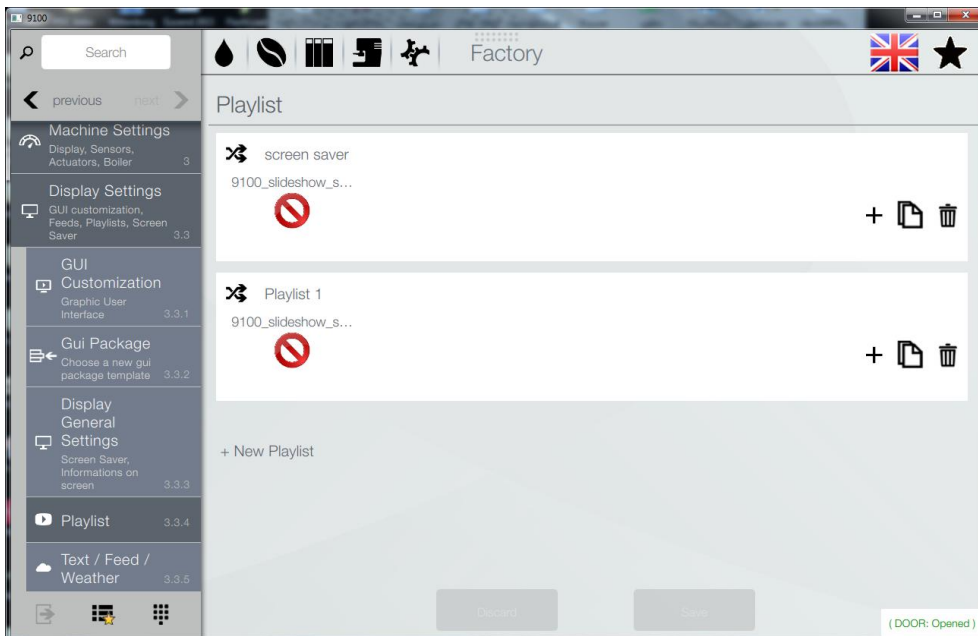
Insert an USB containing your image file.



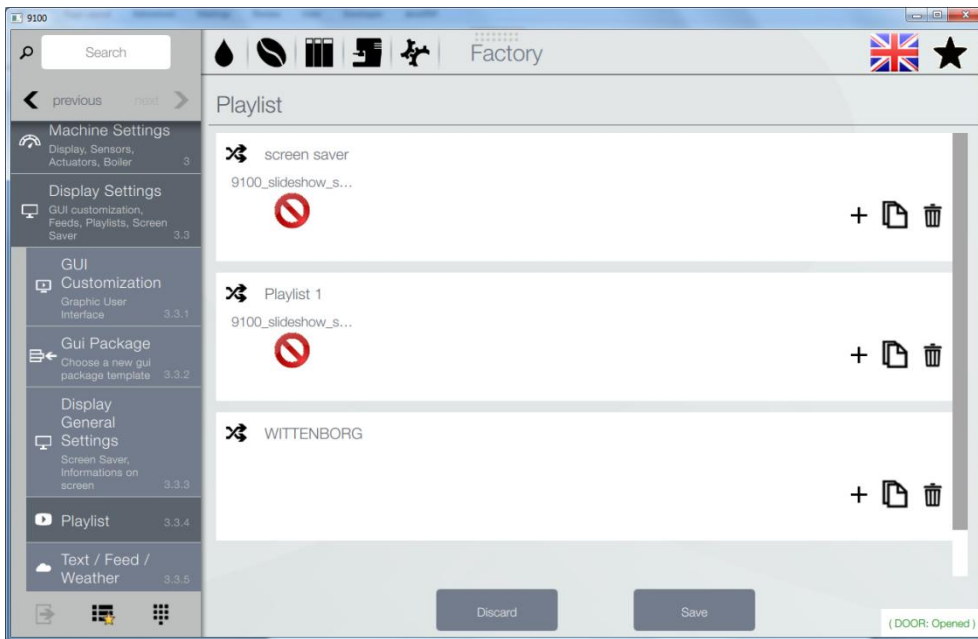
Click on the filename **Coffee.jpg** and IMPORT FILE



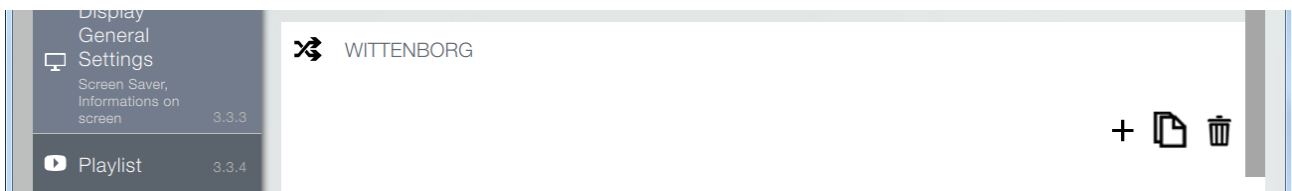
Go to **MACHINE SETTINGS/DISPLAY SETTINGS/PLAYLIST** and click **+ New Playlist**



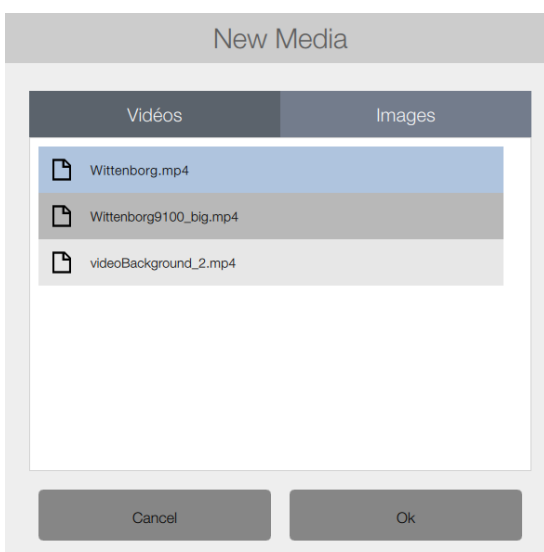
Write the name of the playlist, **WITTENBORG**, and click **SAVE**



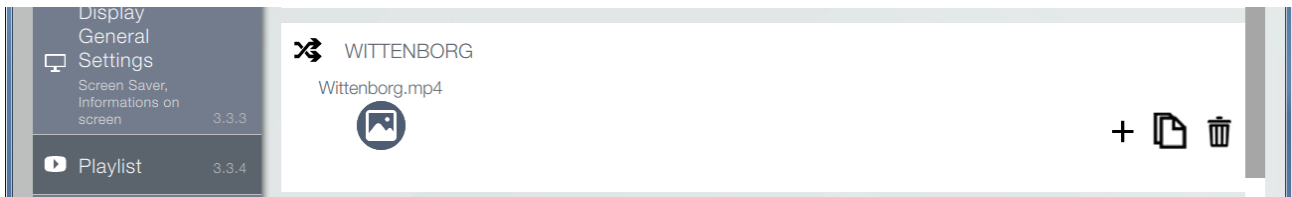
Click on the + sign in the window with the filename **WITTENBORG**



Click on **VIDEOS** and click on the video file **Wittenborg.mp4** and then **OK**



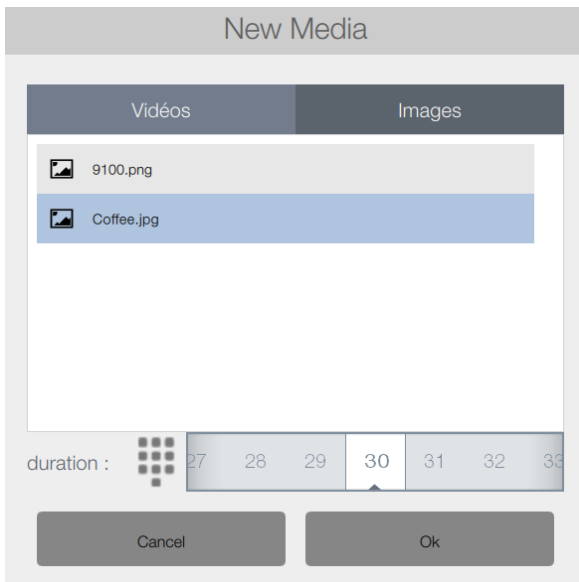
Click on the + sign in the window with the filename **WITTENBORG**



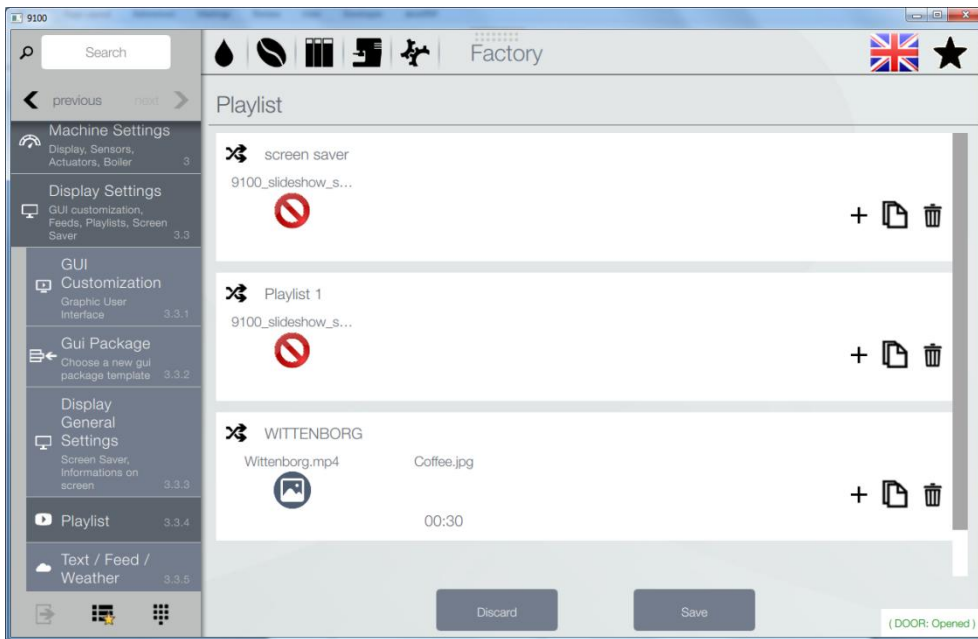
Click on **IMAGES** and click on the image file **Coffee.jpg**

Set the **duration** to 30 and then click **OK**

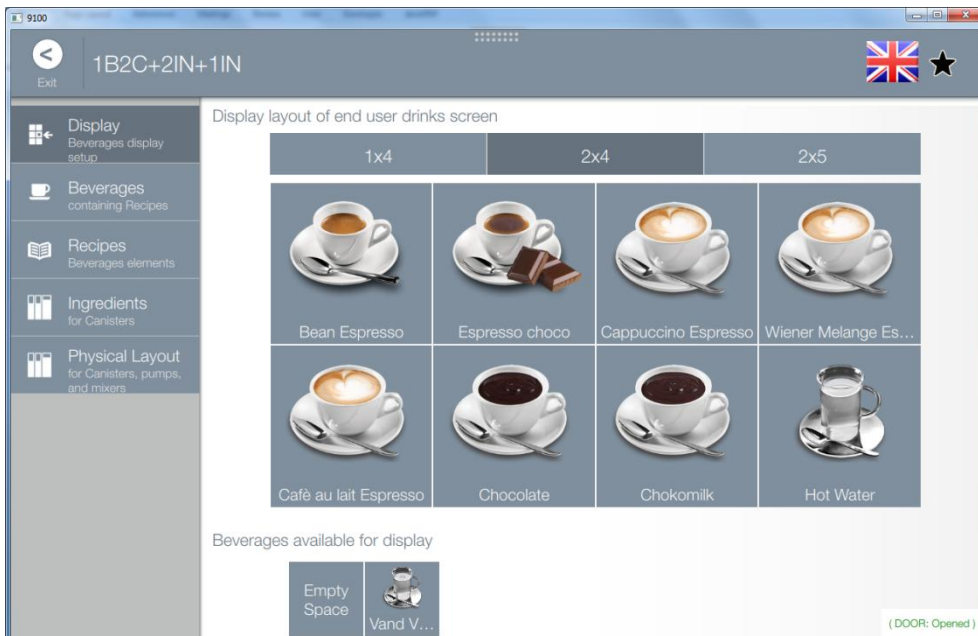
The duration is the time, in seconds, the picture is displayed during a delivery



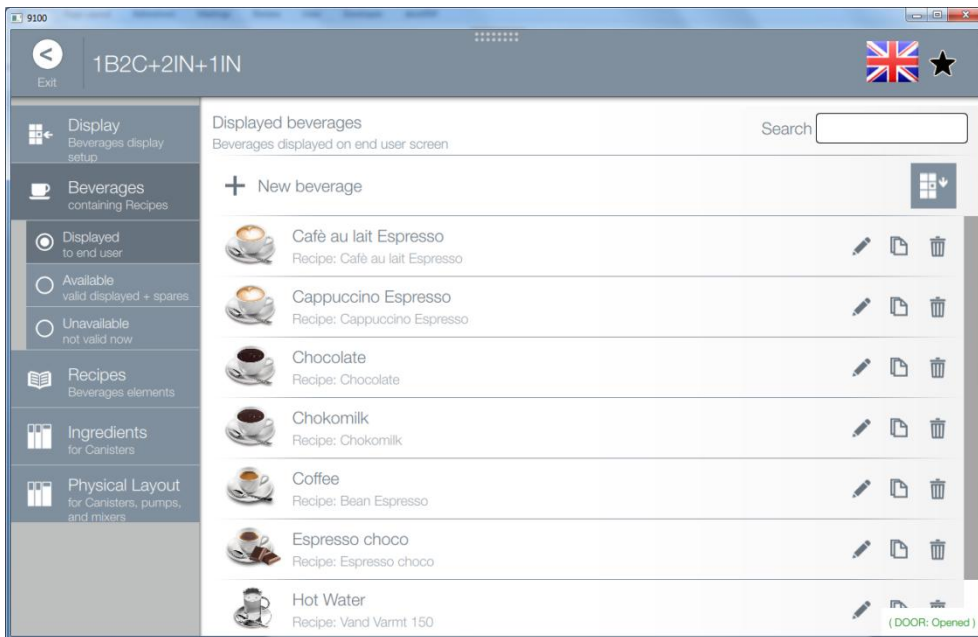
Click **SAVE**



Go to **DRINK SETTINGS** and click **BEVERAGES**



Click on **COFFEE**



Click on **PLAYLIST**



Select **WITTENBORG** and click **OK** and then **SAVE**

